



# **Dr Varsha Khurana**

Speaking at

**Homeopathy International (HINT)  
Post-COVID online event May 2021**

**A recording of the full event is available:**

**<https://hint.org.uk/event-recordings/>**



# COVID19

**MORE THAN A NIGHTMARE ..**



# MODE OF ONSET

Gradual, then sudden is typical of this infection.

# EXPRESSIONS OF C19

- Usually, no PQRS symptoms
- Pathognomonic and common symptoms usually





MIASM

60% Psoric  
Tubercular  
Syphilitic

# 5 PILLARS OF ACUTE PRESCRIBING

- Causation/ predisposing-precipitating factors: Co-morbidity like DM/Heart disease/ Lung disease etc. ( h/o corticosteroids-methotrexate-radiotherapy-flu jab-immunosuppresants-hydroxychloroquine )
- Location, side, extension, radiation
- Sensation and complaints
- Modalities
- Concomitants, physical and mental: particular/ general




## FEVER TYPE

Intermittent fever is characteristic of this infection.

If the fever was very high, right from the beginning, then it is quite unlikely to be C19.

Hectic fever could be C19, but with tuberculosis in the background.





# REMEDY PATTERNS

Solanacea family (Acon, Ars, FP, Cham, Bell, Stram): Sudden onset, rapid progress

Gelsimium, Causticum, Bryonia, Cocculus, Plumbum met: Gradual development of the pathology





## REMEDIES OF SUDDEN ONSET

Aconite, Ail, All-Cepa, Amm Carb,  
Antim-T, Ars Alb, Ars-I, Arum-T,  
Brom, Cor-R, Eucalyptus, FP, Hepar,  
Iod, Lob-S, Merc, Nat-Ars, Nux  
Vom, Penic, Phos, Pyro, Ran-B,  
Rumex, Sabadilla, Squilla,  
Solanacea Family (Bell, Sol-N, Dulc,  
Hyos), Spiranthes, Spongia, Tub

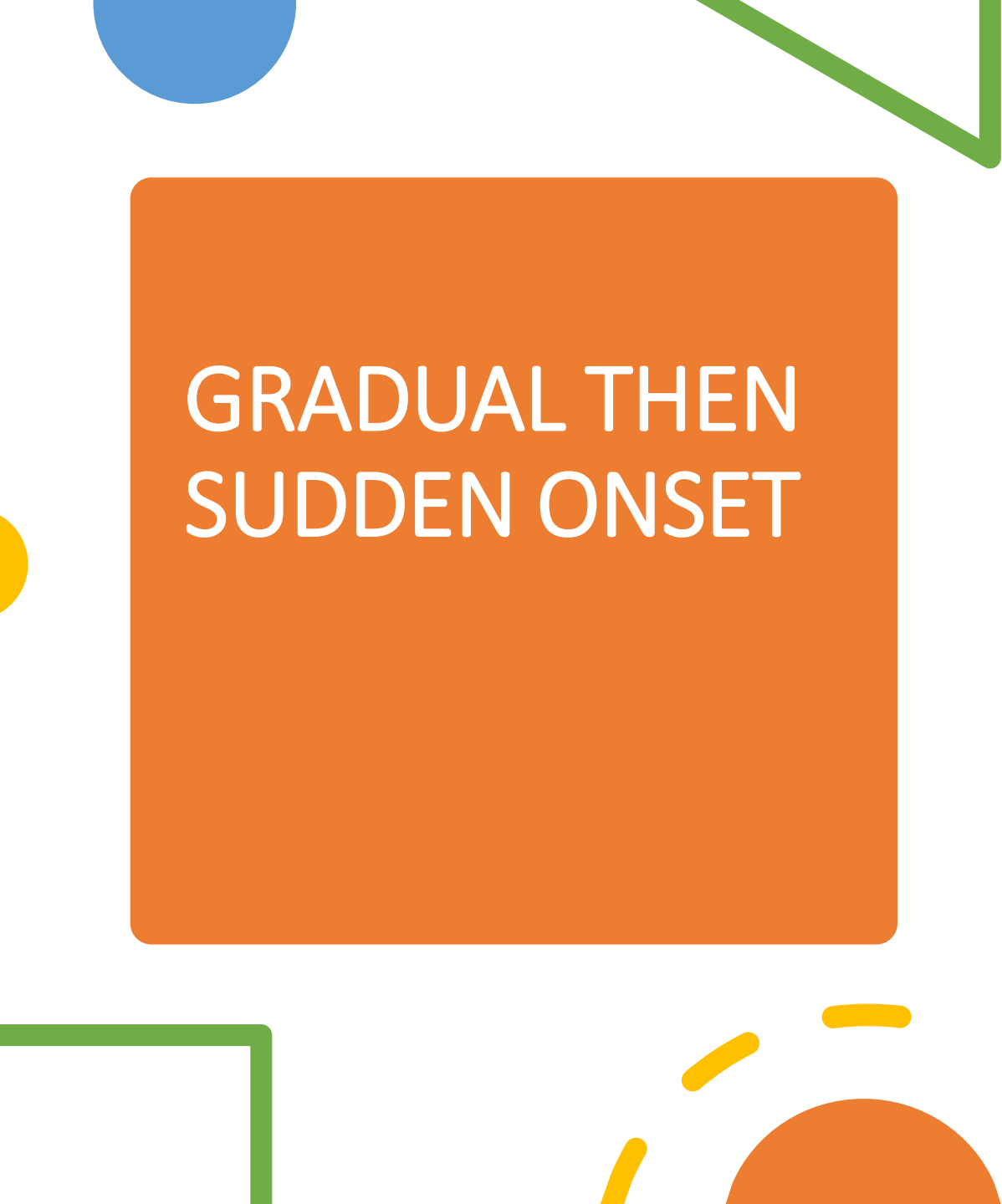




## REMEDIES OF GRADUAL ONSET

Agar, Am-M, Ant-Ars, Arg-Met, Arg-N, Aur-M, Bry, Carbon Group (Carbo Veg, Carboneum Sulph, Graphites, Kreosote), China, Ferr-I, Ferr, Fl-Ac, Gels, Hippoz, Kali Group (Caust, Kali Ars, Kali Carb, Kali Mur, Kali S, Kali Bi, Kali I), Naja, Nat-S, Plat, Puls, Raphanus, Sang, Sil, Senega, Sticta, Stannum, Stront-Carb, Teucrium, Thuja





GRADUAL THEN  
SUDDEN ONSET

Am c, Ars, Bapt, Bryonia, K ars, Kali  
carb



SUDDEN  
THEN  
GRADUAL  
ONSET

Agaricus, Ant-Ars, Arg-M, Arg-N,  
Bry, Fl-Ac, Kali Ars, Kali Mur, Merc-  
C, Nat Mur, Stannum, Sulph

# SUCCESSION OF STAGES

- Chill, accompanied by heat
- Chill, alternating with heat
- Chill followed by heat
- Chill followed by heat, then sweat
- Chill, with sweat
- Chill without heat
- Chill followed by heat with sweat
- Chill followed by sweat, without heat intervening
- Heat with sweat
- Heat without sweat
- Heat alternating with sweat
- Sweat alt with chill

You can keep this chart with you for case analysis.

Mind,  
excitement,  
excitable,  
fever during

ACON, Alum, Anthracinum, APIS, Ars alb, ARS-H, Bac, BELL, Bov, Bryonia, Caps, Carb-ac, CHAM, Chin-s, Cina, COCC, COFFEA, Coff-t, CONIUM, Elaps, FERR, Ign, Ipec, K carb, LACH, Lachn, LYCO, M arct, Mag c, Mag mur, Moschus, Mur ac, NUX VOM, Opium, PETROLEUM, Ph-ac, Puls, RHUS TOX, Ruta, Sabina, SARSAPARILLA, Sec, SEPIA, Stram, Sulphur, Tarentula, Tela, TEUCRIUM, Thuja, VALERIANA, Ver alb

Cheerfulness,  
fever during

FP, Acon, Clematis, Coffea, Harp, Moschus, Nat carb, OPIUM,  
Petroleum, Platina, Sabadilla, SARS, Thuja, Ver alb

Mind,  
dullness, fever  
during

AA, Amm-carb, Angustura, Arnica, BAPT, Bell, Bry, Cadm,  
Camphor, Caps, CARBO VEG, Chin Sulph, COLCHICUM, Cupr,  
Eup-Perf, Gels, Guare, HELL, HYOS, Ipec, Kali Carb, Lach,  
Laurocerasus, LYCO, Malaria, Nat-C, NUX VOM, Ph-Ac, Phos,  
PODO, Rhus Tox, Ruta, Sepia, STRAM, SULPH, Term-C,  
VALERIANA, Verat vir



Collapse, fever  
during

Ail, Antipyrinum, ARS, CAMPHOR, CARBO VEG, LAUR, China,  
Crat, Crot-H, Hyos, Hyosin, Merc-cy, Mur-ac, Secale, Veratrum

A large orange circle is positioned on the left side of the slide, partially cut off by the edge.

## MILD TO MODERATE CASES

Acon , Ars alb , Ars iod, Bryonia , Beryllium,  
Chelidonium , China, China ars, Drosera, Eup  
perf, Ferr phos, Gels, Hepar, Merc sol, Merc cy



# SEVERE CASES

Acetanilidum, Apis, Ars alb, Antim-ars, Antim-tart, Beryllium, Bryonia, Camphor, Carbo veg, Hippozaeninum, Iodum, Kali carb, Kali iod, Lobelia, Lycopodium, Phos, Pyrogen, Stannum met, Sulphur, Bacillinum, Tuberculinum, Ver alb



# CRITICAL CASES

Amm carb , Ars alb, Antim tart, Antim ars ,  
Camphor , Carbolic ac, Carbo veg, Crotalus  
horr, Hippozaeninum , Kali iod, Lach , Naja ,  
Phos, Stront-carb, Tuberculinum , Ver alb, Ver  
vir



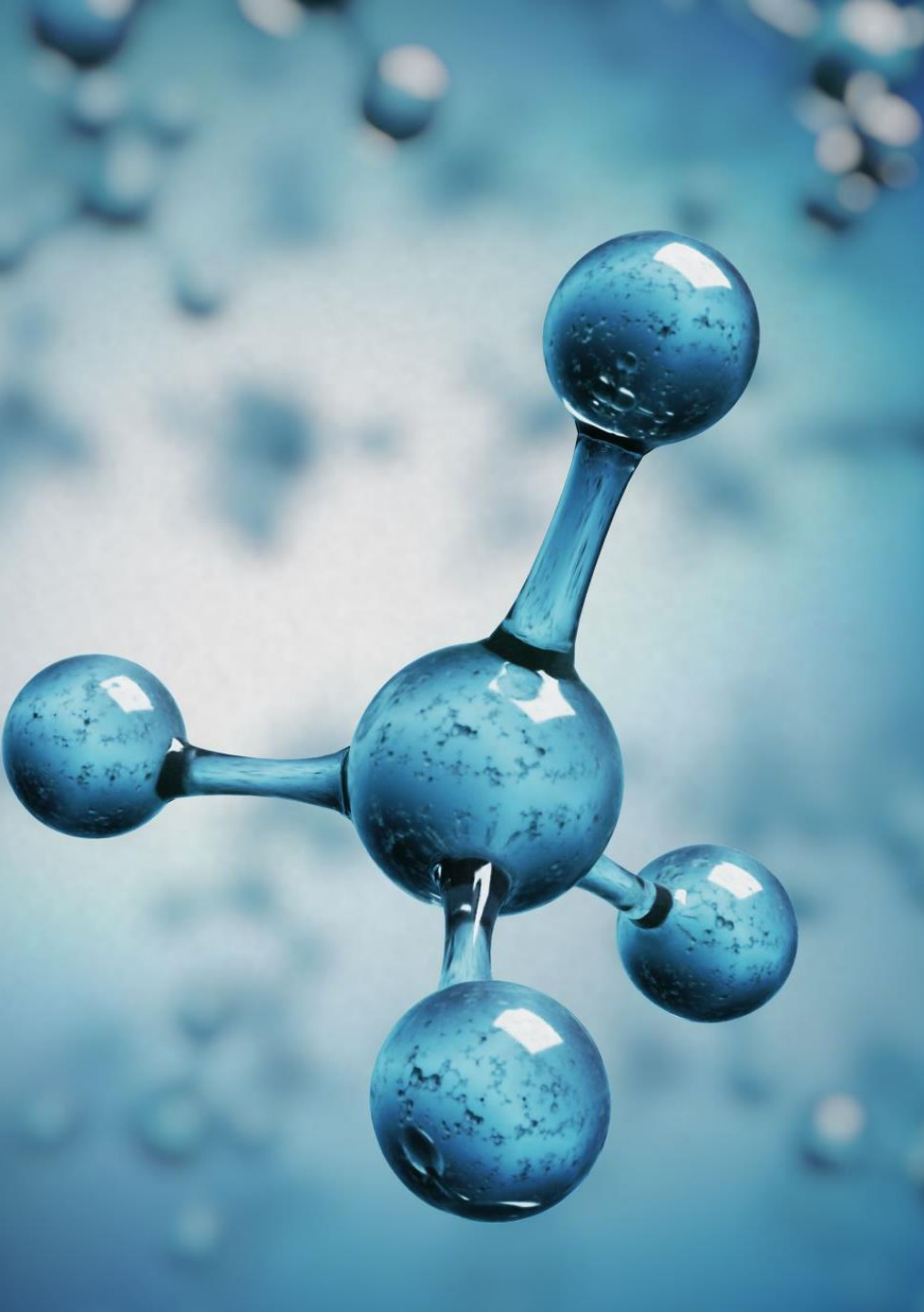
# RUBRICS RELATED TO THE CYTOKINE STORM

- Stomach, appetite, wanting
- Kidney, renal failure, acute
- Chest, abcess, lungs
- Generals, pulse, frequent
- Blood, oxygen, diminished
- Perspiration, cold
- Generals, collapse
- Generals, collapse, sudden
- Generals, reaction, lack of
- Generals, violent complaints
- Generals, vitality decreasing
- Respiration, accelerated, quick
- Clinical, hypotension



# CYTOKINE STORM REMEDIES

ACET-AC, ACETAN, ACON, adrenalinum, AM-C, ANT-M, ANT-T, ANT-A, ANTHRACINUM, ANTIPYRINUM, APIS, arnica, ARS ALB, ARS-H, ARS-I, bapt, bell, calc-ars, CAMPHOR, CARB-AC, CARBO-AN, CARBO-V, CARBONEUM-S, carc, CHINA, crat, CROTALUS-H, CUPR, CUPR-AC, CUPR-ARS, DIGITALIS, ELAPS, ferr, ferr-p, glon, graph, HELL, HYOS, hippos, HYDR-AC, iod, ion-ray, KALI-BR, kali-n, KALI PHOS, kreos, LACH, lat-m, LAUR, lobelia, lyco, MEDO, MERC, merc-c, merc-cy, mur-ac, NAJA, nicotine, opium, ox-ac, phos-ac, PHOS, plumbum, PSOR, PYROGENIUM, SECALE, SENEGA, SEPIA, stannum, stram, STRONT-C, STRY, SUL-AC, SULPHUR, TABACUM, thymuline, TUBERCULINUM, VERATRUM, VERATRUM VIR, vipera, ZINC, zinc-m

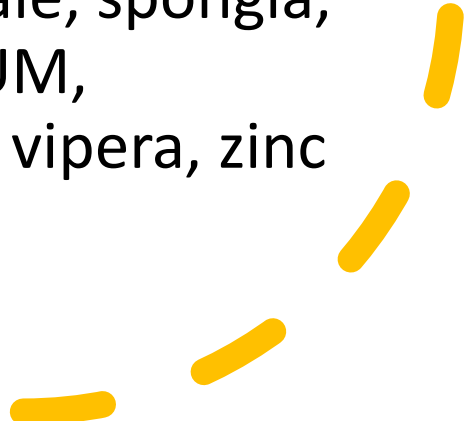


# HYPOXIA

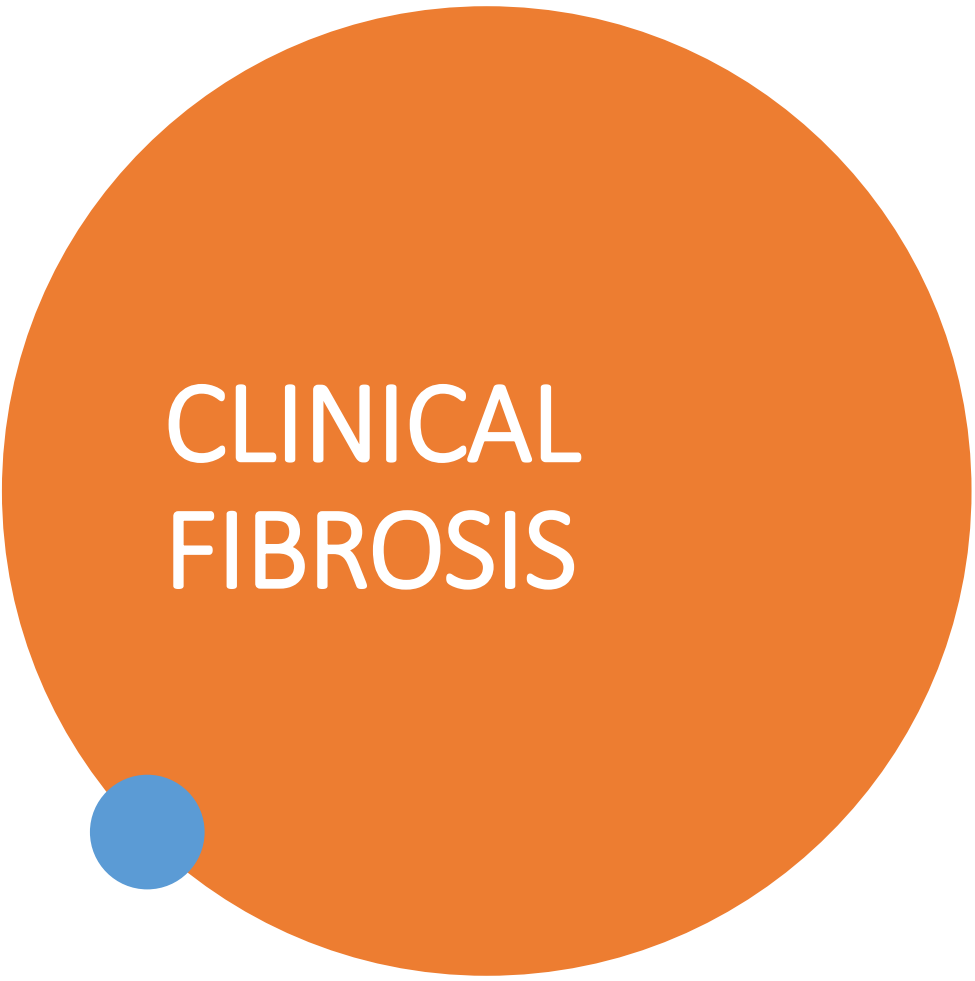
- Normal oxygen saturation level: 94% - 99%
- Mild respiratory diseases: 90% and above
- Below 90%, supplementary oxygen is required

# CLINICAL HYPOXIA

ACET-AC, ACETANILIDUM, ACON, AMM-C, amm-caust, ANT-ARS, ant-crud, ANT-T, APIS, ARNICA, ARS ALB, ARS-IOD, atropine, AURUM, baptisia, BELL, bov, brom, bry, butho-t, CAMPHOR, carb-an, CARB-V, CARBONEUM-S, CHINA, CHLOL, crat, CROT-H, CUPRUM, cupr-ac, curare, DIG, FERR, ferr-i, FERR-PHOS, GRAPH, HELL, HEPAR, HYDR-AC, justicia, kali-c, kali-cy, kali-l, kali-n, kreos, LACH, lat-m, LAUR, lyco, merc, merc-c, mur-ac, naja, nat-s, NICOTINE, OP, ph-ac, PHOS, PSORINUM, pyrogen, sambucus, secale, spongia, stannum, strychnine, SULPH, TABACUM, TUBERCULINUM, VERATRUM, VER-V, vipera, zinc







# CLINICAL FIBROSIS

ANT-A, ANT-T, ARNICA, ARS, ARS-BR, ARS-I,  
brom, BACILLINUM, BERYLLIUM, BRYONIA,  
CALC-ARS, CALC-F, CARBO-AN, CARBO-V, CARC,  
chr-met, CAUST, CON, CROT-H, CUPRUM,  
curare, dig, dros, ferr, ferr-p, FL-AC, GRAPH,  
GRINDELIA, HEPAR, hip-ac, HYDRASTIS,  
IODUM, ion-rad, KALI-BICH, kali-c, KALI-I,  
LACH, LAP-A, LYCO, MEDO, MERC-MERC-D,  
MUR-AC, NAT-M, NIT-AC, penic, PHOS, PLB,  
PSOR, SIL, stann, STRONT-C, SULPH,  
SYPHILINUM, THIOSINAMINUM, THUJA, TUB,  
ver-v, ver-alb



# LABORATORY FINDINGS

RT-PCR +ve patients have higher

- Absolute neutrophil count
- CRP: Over 100 mg/l, expect complications.
- LDH: Normal LDH: 140 U/L; above 300 U/L is a warning signal. Above 500, the patient needs to be admitted to the ICU.
- AST/ ALT
- UREA levels
- Pro-calcitonin: Normal 0.1-0.5 ng/ml; when between 0.5 – 2, moderate inflammation levels. Between 2-10, severe sepsis, and the pat can go into septic shock.



# LABORATORY FINDINGS

- **Low WBC count:** if it is increased, it is usually not C19. If the lymphocytes are less than 20%, admit the patient. If progressing lymphocytopenia, with rising LDH, admit the patient to the ICU.
- **Low Serum albumin level**
- **IL-6:** This test should be done after 6 days to detect cytokine storm. Also used to assess the severity of pneumonia as well as prognosis. Normal value: 0-16.4 pg/ml; when more than 3 times, denotes IL storm.
- **Ferritin:** Similar use of hyper-ferritinaemia. Normal: 12-300 ng/ml (males) and 12-150 ng/ml (females), when it crosses 500, active lung pathology is indicated and above 1000, the prognosis is bad.


# IMPORTANT POINTERS

- Prognosis: Raised IL-6, D-dimer, and decreased platelets are helpful to identify early-stage patients with poor prognosis. Elevated D-dimer is found to be associated with higher mortality and is also helpful to rule out thromboembolism.
- If lymphocytes, CRP, ESR are normal, then the disease is going to be self-limiting. Raised CRP and ESR are indicative of inflammation in the body. High ESR, CRP, D-dimer, ferritin, indicate high risk for severe illness.
- X-ray/ CT lungs: after 4 days of the infection, acts as a supportive evidence for ground glass lesions. If it is normal, do not assume that all will remain well in the future. If the patient develops cough and weakness, repeat the test. If the CT shows more than 25% of lung involvement, the patient needs ICU admission.
- RR/ Spo2: RR more than 24 and Spo2 less than 94, be alert. Monitor Spo2 twice daily after 6 mins of walking, if it is equal to or less than 93%, he is likely to develop happy hypoxia. Spo2 less than 88% on the oximeter is a red flag.



# THROMBOSIS

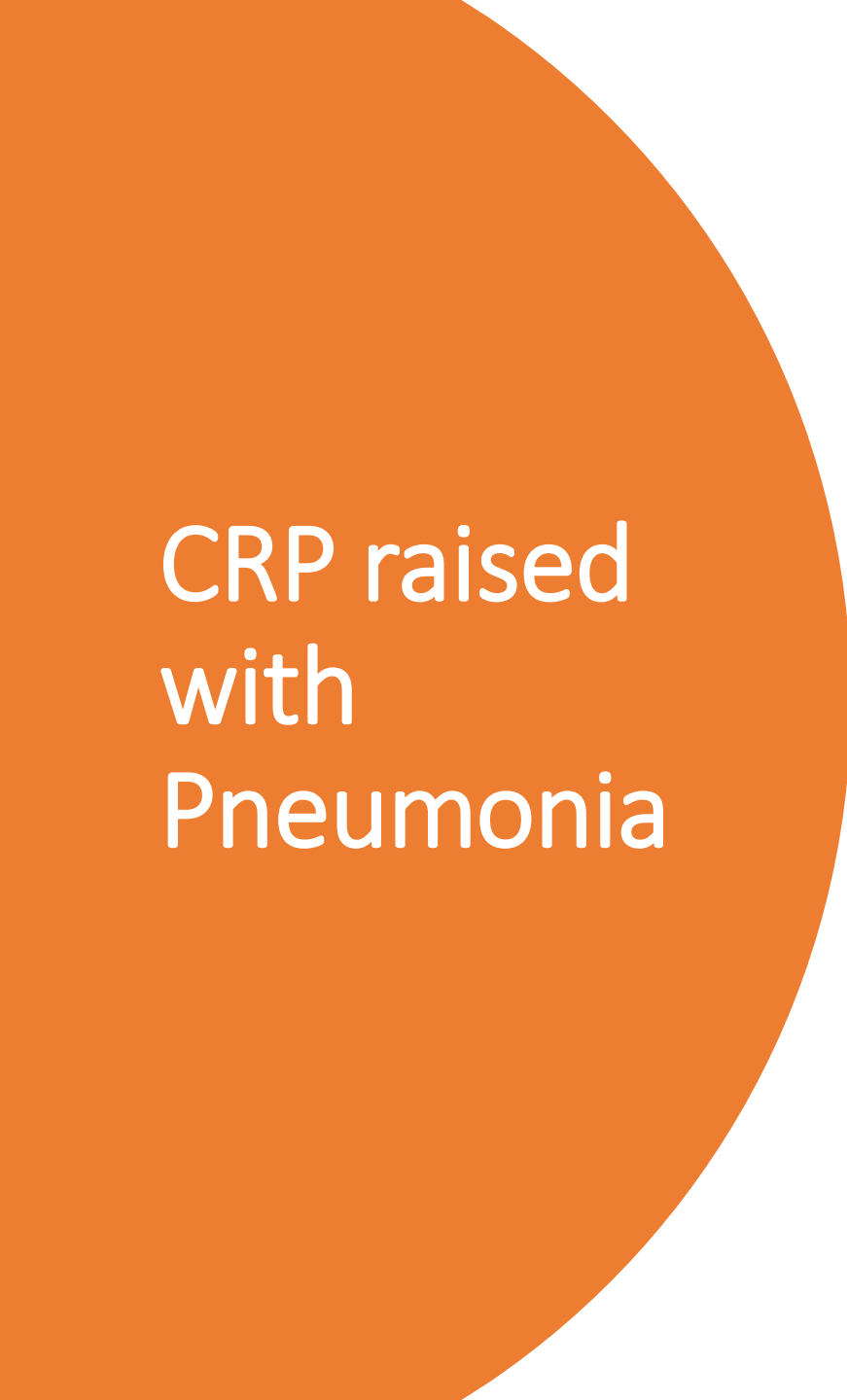
Acet-ac, ACETANILIDUM, acon, amm-c, amm-caust, antipyrine, APIS, aquilla-a, ARG-N, ARNICA, ARS, ba-sv, bac, bell, benz, biti-g, BOTHROPS, bufo, CALC-ARS, carbo-v, CARD-M, chlorpr, corticotropin, crat, CROT-H, euph-pu, FL-AC, flor-p, gels, gink, haliae-lc, HAM, hedeoma, hir, interf, ipecac, KALI-CHL, KALI-I, KALI-M, kreosote, lach, lat-m, MEDO, NAT-S, OP, phos, pitu-p, rad-br, rhus-t, SEC, strepto, stront-c, tarentula-c, thuja, VIPERA, VER-V



# EMBOLISM

Acon, amyl-n, AMM-C, ARNICA, ars, aurum, BELL, both, CALC-ARS, carbo-v, CAUSTICUM, CHEL, crocus, CROT-H, euph-pu, GLON, HAM, KALI CARB, KALI-I, KALI-M, LACH, lat-m, LEDUM, MERC-C, naja, nat-sal, OP, PHOS, pitu-p, sal-ac, SYPH



A large orange circle is positioned on the left side of the slide, partially cut off by the edge.

# CRP raised with Pneumonia

ANT-AR, ANT-T, ARS, BAPT, BRY, CACT, CAMPH,  
CARN-AN, CARBO-V, CHEL, CROT-H, FERR,  
FERR-P, GRINDELIA, HEPAR, HIPPOZ, HYDR-AC,  
IOD, KALI C, KALI-CHL, KALI-I, KALI-M, KALI-P,  
LACH, LOB, LYCO, MERC, OPIUM, PHOS,  
PYROGEN, RHUS-T, SEC, SIL, STROPH, SULPH,  
TUB, ZINC





## ARDS Remedies

ACET-AN, ACON, AMM-C, AMM-C,  
ANT-A, ANT-T, **APIS**, ARNICA, ARS,  
BELL, **BRY**, CAMPH, CARB-AN,  
CARB-V, CENCH, CHINA, CIMX,  
**CUPRUM**, DIG, DROS, **GRIN**,  
HEPAR, **HYDR-AC**, KALI-C, KALI-I,  
KREOS, **LACH**, LAT-M, **LAUR**, **LYCO**,  
NICOT, **OP**, OX-AC, PHOS, PLAT,  
PSOR, **SAMB**, **SIL**, STANN, **SULPH**,  
TABACUM, VERAT, VERAT-V



# SEPTIC SHOCK remedies

ACON, AIL, AMM-C, ANT-T, **ANTHRACINUM**,  
APIS, ARNICA, **ARS**, BAPT, BRY, CALEN,  
CAMPH, CARB-AC, **CARB-V**, CENCH, CHIN,  
CHIN-ARS, CHIN-S, **CROT-H**, **ECHIN-A**, ELAPS,  
FERR, HIPPOZ, KALI-C, **KALI-I**, KALI-P, KREOS,  
**LACH**, LYCO, MERC, MERC-CY, MUR-AC, NAJA,  
NAT-M, NIT-AC, NUX-V, OP, PHOS, PULS,  
**PYROG**, RHUS-T, SAL-AC, SECALE, SULPH,  
TARENT, TARENT-C, THER, **VERAT**, VERAT-V, VIP



# Clinical Ferritin High

- Adrenaline, ant-c, ant-a, ant-t, arnica, ARS, ars-h, ars-l, bell, bry, cadm, calc-a, calc, calc-p, CHIN, CHIN-A, CHIN-S, cob-n, cupr, FERR-ARS, FERR-I, FERR-M, FERR-P, HEP, iod, ipec, LACH, lyco, merc, mur-ac, nat-m, phos, plb, PULS, sec, SULPH, thea, TUB, vanadium, verat, ZINC
- Skin, bronze: Adren, secale, Tub, Ant-c

# INTERMITTENT FEVER

- Amm-c, amm-m, ant-t, APIS, arnica, ARS, ars-I, bapt, bell, bry, CALC, camph, carb-ac, carb-an, carb-v, chin, chin-ars, chin-s, dros, echin, eucal, eup-pur, FERR, ferr-ars, ferr-I, ferr-phos, gels, hep, iod, KALI-S, lach, laur, LYCO, merc, mur-ac, naja, NAT-M, NAT-S, NIT-AC, ph-ac, phos, PSOR, puls, PYRO, ran-b, ran-s, rhus-t, sabad, samb, sec, sep, sil, sin-n, spong, stann, staph, stram, SULPH, TARENT, TUB, verat, verat-v, vipera, zinc
- Frequently indicated: Ars, Chin, Echin, Eup-Pur, Ferr-P, Lyco, Phos, Psor, Pyro, Stram, Sulph, Verat, Verat-V, Tub



## CONCOMITANTS TO FEVER

- D lemonade: Bell, Calc, Eup-perf, Lach, Puls
- D warm drinks: Ars, Bry, Bell, Eup-per, Chin-ars, Ferr p, Chel, Tub, Lyco, Sabadilla, Sulph
- Abdomen pain: Ant-c, Ars, Cham, Cina, NV, RT, Sulph
- Dry cough: Acon, Apis, Ars, Arnica, Bry, China, China-ars, Hyos, Ip, Lach, Lyco, Nat m, Nux vom, Op, Phos, Puls, RT, Sabadilla, Samb, Sulph
- Loose cough: Apis, Ars, Bell, Bry, Calc, China, Phos-ac, Phos, Puls, Sil, Sulph, Thuja
- Complaining, during fever: Acon, Bry, NV, Verat
- Anxiety during fever: Acon, Ars, Bell, Bry, Calc, Ferr p, Ipec, Hepar, Merc, Phos, Puls, RT, Sepia, Sulph



# **SHEET ANCHORS FOR C19**

**MERC CYAN, APIS, ANTIM ARS,  
TUBERCULINUM, PHOS**

# SOME REMEDIES AND SALIENT POINTS

## ACETANILIDUM

Cardiac/ respiratory collapse. Cyanosis.  
Thrombosis.



# AMMONIUM CARB

Toxic/ shock states. Hypoxia. Thrombosis. Collapse. In desperate cases, a sheet anchor like acet ac, acetan, acon, ant-t, ars, camph, carbo-v, veratrum.

Relations: Similar to Carbo v. Gels stands between its earlier and later stages. Chemical snake, inimical to Lach. R-sided, chilly, less sensitive than Lach.

Complementary: Adonis, Ars, Calc, Lyco, Phos, Sep, Stroph, Thuja, Verat

Rescue remedies: Acet Ac, Acetan, Acon, Amm-C, Ant-T, Ars, Camph, Carbo-V, Crat, Crot-H, Dig, Hydr-Ac, Kali-P, Laur, Verat

# ANTIMONY GROUP

Antim-tart and Antim-ars are more for severe to critical stages. Rattling with less expectoration is characteristic of this group. Not indicated for thrombosis and bleeding.

Antim-ars: Must study in detail

Relations: Warm blooded unlike Ars but like Ars-I, restless like Ars, rattling expectoration like ant-t

Similar: Amm-C, Ant-T, Ars, Aurum, Hepar, Lach, Merc, Phos, Puls, Stry-P, Sulph



# APIS

Sudden onset and edema in the brain or lungs are the main indications. Red rosy hue, heat intolerance, < slight touch and sting like spots on the skin, indicate this remedy. Severe encephalopathy, with sudden sharp cries, stupor, confusion and dizziness.



# ARSENICUM ALBUM

A profoundly acting remedy on all the organs and in all the stages. A/F crowded places, spoiled meat. Collapse stage of pneumonia, severe weakness. Multi-organ failure. Rapid inflammation. Sudden decline. Syncope. Cold sweat. Dizziness.

Covers from mild to critical variety of COVID. ARDS leading to death. On top of it, fear and terror injected in the minds of people with the resulting anxiety made it the main remedy chosen in India, by the government.

One of the important remedies for prevention of pathologies (after Ferrum phos and Ver vir) is Ant ars. A patient where Arsenicum has helped only partially and the patient is developing severe breathlessness, think of Ant-ars.

# BERYLLIUM

Similar to Phos, CV, Carbo-an, Bryonia, Psorinum. Main indication is very slow resolution or frequent relapses, long drawn-out recovery.

# CARBOLIC ACID

- A blood-poisoning remedy like Baptisia, Echinaecea, Pyrogenium, but with tissue destruction like Ars and Secale. A homeopathic antibiotic for infections and intestinal toxaemias like Baptisia and Eucalyptus.
- Old age, low resistance/ vitality. Coryza with watery discharge and resulting debility.
- Fever high at onset, tendency to collapse.
- Malignancy. Circumscribed pneumonia/ double basal/ necropneumonia/ septic pneumonia (Bapt, Pyrogenium). Pneumonia R base and lung gangrene. Gasping for breath, unable to lie down, wants hands held. Long inspirations, with yawning. Impending respiratory paralysis.
- Very rapid onset. Critical stages when extensive pneumonia, septic shock, system failure. Phenol poisoning causing ARDS.
- Septic foci, with high IL-6, carbolac is a very good remedy.

# CARBON REMEDIES

- Hypoxia is central to carbon remedies. Characteristic is GIT complaints like flatulence and distension of abdomen.
- ICU remedies: Carb-sul, Carbo-v, Carbo-oxygenisatum, Carboxy-methylcellulosum
- All the carbon remedies should be included under thrombosis, not only Carbo-v.
- Carbo-s has an affinity for brain and nerves and is a good choice for C19 when neurological symptoms like loss of taste and smell, tingling etc. appear. D/d with Zincum here.

# CARBO VEG

- Cyanosis, coldness, suspiciously insensible or painlessness of complaints.
- Last stages of disease, with cold breath, cold sweat, collapse, cold tongue, head hot, must be fanned hard etc. neglected, advanced late-stage pneumonia.
- Suppuration with cyanosis.

# CROTALUS HORRIDUS

This is a more powerful remedy than Lach and Pyrogenium. Intensified Baptisia, Camphor, Heloderma, Lach, Pyrogenium. It is a rescue remedy like Amm carb, Antim tart, Arnica, Cactus, Camphor, Carbo veg, Crataegus, Hydrocyanic acid, Kali phos, Lat-mur, Laurocerasus. It can be indicated in grave stages which are beyond Carbo veg, Bufo etc. Indicated in DIC (from absolute MM).

1. Crot horr: more on blood, less on the heart, hot
2. Naja: more on the heart, less on the blood, chilly
3. Lach: on both equally



NAJA

Naja venom contains Zinc. Brain/neurological and cardiac symptoms together make one think of Naja. They look puffy and cold.



# GELSIMIUM

- Heaviness, dullness, drowsiness, thirstlessness, fullness at the root, chills up and down the back.
- Burning and lump sensation in the throat.
- Swallowing causes pain ears like Hep.
- Catarrhal sore throats, > warm drinks, swallowing warm drinks less difficult.
- Dyspnea with heavy chest.
- **Relationships**

Early stage of Baptisia, Carboneum sulph, Curare, Echinaecea, Hell, Opium, VV, Zinc

Midway between Bell and Baptisia. Lacks violence of Bell and toxicity of Bapt.

Amm carb is an early Gelsimium. Baptisia for later stages of both Amm carb and Gels. Gels is a sycotic Lach and Amm carb is a chemical snake. **Hence the trio: Amm carb-Gels-Lach**

# FERRUM ARS/ MET/ PHOS

- Inflammation, 1<sup>st</sup> stage. Susceptible to chest problems.
- Haemorrhagic diathesis, haemoptysis. Bright red flushing.
- Inflammation with consolidation. High temp.
- Marked prostration.
- FP can avert DIC and reduce the risk of CVA or thrombo-embolic phenomenon.
- Relations: Excitement and terror of Aconite not observed in FP. Midway between Aconite and Bell and asthenic sluggishness and torpidity of Gels. Earlier stage of Phos and VV. **Early intervention with Ferr phos and Ver vir, can avert complications in Covid.**

# NICOTINUM AND TABACUM

- Hypoxia/ cytokine storm; nausea, cold sweats, speedy collapse
- In a promising paper on COVID 19, it could be a disease of nicotine cholinergic system'. The author concluded, 'Nicotine could have protective effects by enhancing cholinergic anti-inflammatory pathway'. It could be that nicotine could maintain or restore the function of cholinergic anti-inflammatory system and thus control the release of cytokines. This could prevent or suppress the storm.
- Nausea, cold sweat and speedy collapse. Extremities icy-cold.
- Nicotinicum Relations: Dig, Tab, lob.
- Tabacum relations: Acon, Ars, Camph, Dig, Hydr-Ac, Lyco, Nicot, Op, Phos

# VERATRUM VIRIDE

- Suddenness, violence, congestive conditions. Inflammations anywhere. Vaso-vagal shock from hypotension and circulatory failure. Etiology can be emotions, fright, sight of blood, violent pains, severe fatigue.
- Relations: Big role after Ferr-p for tiding over the acute crisis. Cytokine storm. Acute invasive stage of inflammation or fully-established inflammation but not later like Hepar, Phos, Sulphur. Has no anxiety as in Aconite, but has the asthenic violence of Bell. It will not reach beyond the asthenic stage like Bell, not useful in conditions like typhoid, septic fevers etc.
- **Brain group: Bapt, Gels, Op, Phos, VV, Zincum**

# BRYONIA

- Regarded slow in pace. Slowly advancing from organ to organ. Inflammations that have become localized and become effusions. Typical 'going home' and 'business' delirium. Pleurisy, R-sided, like FP. Pain better by lying on the painful side.
- **Bryonia Relationships**
- Hemotoxin like Penicillin or Baptisia or Lach but with more paralysis, less zymosis. Look at Baptisia, Chelidonium, Colchicum, Hyos, Lach, Mur ac, Zincum. More low vitality should suggest Bapt, Crot h, Lach.
- Mur ac: Tubercular Bryonia. Both are acutes of Tuberculinum. More sleepiness, polyuria, even involuntary sometimes; no thirst, blueness, lassitude; fluctuating, even subnormal temp; cold extremities, slides down in bed; more septic, < lying on the painful side or R side. Follows well after Bryonia and RT.
- Curare: will look like bryonia but at the highest degree.
- Chelidonium is very close to bryonia as well; symbiotic close-up of bryonia

Similarities: R sidedness, < motion, heat

Differences: Chelidonium; > eating, hot food; < pressure, after midnight

Bryonia, < eating, hot food, > pressure, before midnight

# PYROGEN

A cocktail of 10 remedies: Arnica's soreness + Arsenic's anxiety, restlessness, thirst + Baptisia's toxicity, confusion etc. + Echinacea blood poisoning + Rhus t + Ant-t rattling and fan-like alae nasi + Bell + Carbo veg's prostration and coldness + Coffea's excitement and loquacity + Eup-perf's chills & bone pains.

## REMEDY COMPARISONS

BRYONIA	SENEGA
>rest	<rest
Onset insidious	Onset rapid
R sided	L sided
Warm blooded	Less warm
Dry cough with scanty sputum	Wet cough with profuse sputum
SOA joints	SOA eyes
Tendency to constipation	Tendency to diarrhea

## REMEDY COMPARISONS

BRYONIA	BELLADONNA
Gradual onset	Sudden onset
Slow pace	Rapid pace
Thirst for large quantities of water	Thirstlessness
>Lying on the painful side	< lying on the painful side
Stitching pains	Throbbing pains



## CHELIDONIUM

## BRYONIA

**R sided**

R sided

**< motion**

< motion

**< heat**

< heat

**>Eating**

< eating

**< pressure**

>pressure

**>Hot food**

< hot food

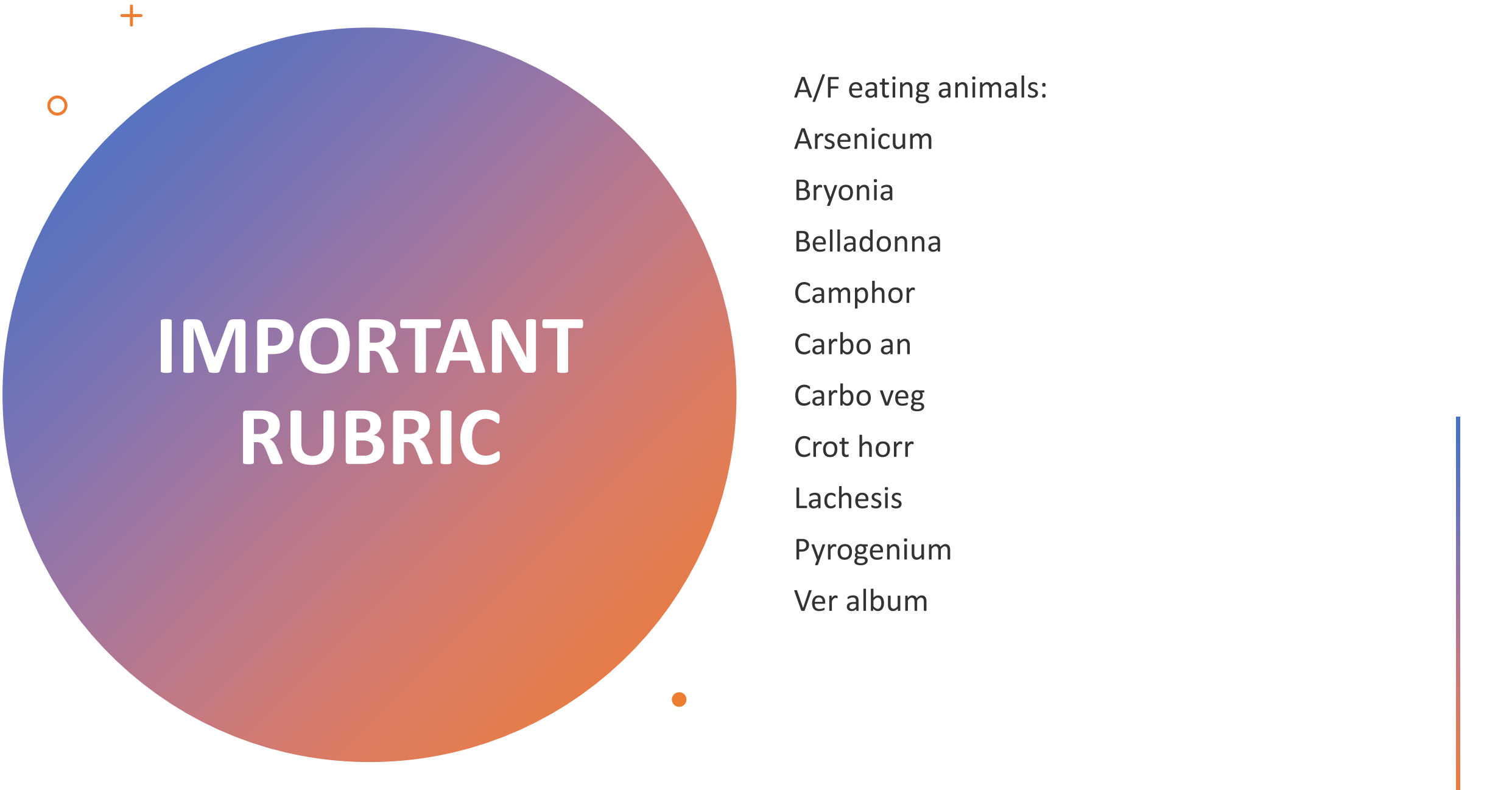
**< after midnight**

>before midnight

<b>BRYONIA</b>	<b>KALI CARB</b>
<b>Thin, light colored discharge</b>	Thick yellowish fetid discharge
<b>&lt; motion, open air; &gt;rest, pressure, lying on the abdomen</b>	< midnight – 5 am, >open air, head bent forward on knees, motion
<b>Epistaxis in the morning on rising, instead of menses</b>	Epistaxis on washing face in the morning
<b>Loss of smell</b>	
<b>Cough dry hacking painful Expectoration rust colored, scanty, tough, lumps of jelly</b>	Cough dry hard asthmatic with wheezing Expectoration salty, thick tenacious, lumps of round balls come flying out of the mouth without effort

ARSENICUM ALBUM	ARSENICUM IODATUM
R sided	R sided
Sneezing without relief	Persistent and unsatisfactory sneezing, coryza < sneezing
Discharge fluent, bloody, burning, profuse, thick, viscid, excoriating, yellow, yellowish-green	Discharge thin fluent excoriating when acute, thick yellowish-green, purulent when chronic
< cold air, open air, after midnight, drinking liquids, lying on the back, > warmth	< dry cold air, warm south winds, > open air
Colds descend to chest	Acute coryza getting chronic
Suffocative, asthmatic cough, with dyspnea	Same
Expectoration scanty, frothy	Expectoration, mostly absent

HEPAR SULPH	MERC SOL
Respiratory mucous membrane	Glands more than the membranes
Profuse secretions and suppurations	Ulceration with suppurations
Discharges muco-purulent, yellow, thick like old cheese	Discharges fluent acrid thin offensive or thick yellow-green
< cold air, change of weather	< night, damp, heat
Sneezing with coryza, from cold dry wind	Much sneezing without coryza, < sunshine
Ripe colds	Colds extending up or attacking eyes
Sphincter-like pain throat	Burning pain in the throat
Tonsillitis with mucus	Tonsillitis with much salivation
Cough with profuse expectoration	Cough with scanty expectoration
Unspecific	Cough in 2 paroxysms
Expectoration loose but difficult to do it	Expectoration loose daytime, dry night
Cough with weakness and much pus like discharge	Cough with headache



# IMPORTANT RUBRIC

A/F eating animals:

Arsenicum

Bryonia

Belladonna

Camphor

Carbo an

Carbo veg

Crot horr

Lachesis

Pyrogenium

Ver album



# EFFECTIVE TRIOS

Bry-FP-VV

Ars-FP-Phos

Bry-FP-Phos

# PREVENT RELAPSE

- Every patient who has recovered from C19 should be given a dose of Tuberculinum 1M, in order to prevent relapse. More doses can be thought of, for individual cases.
- A focus on Influenzinum or Ocillococtinum is not appropriate as it is a deeper destructive virus and it has a specific syndrome unlike common flu.